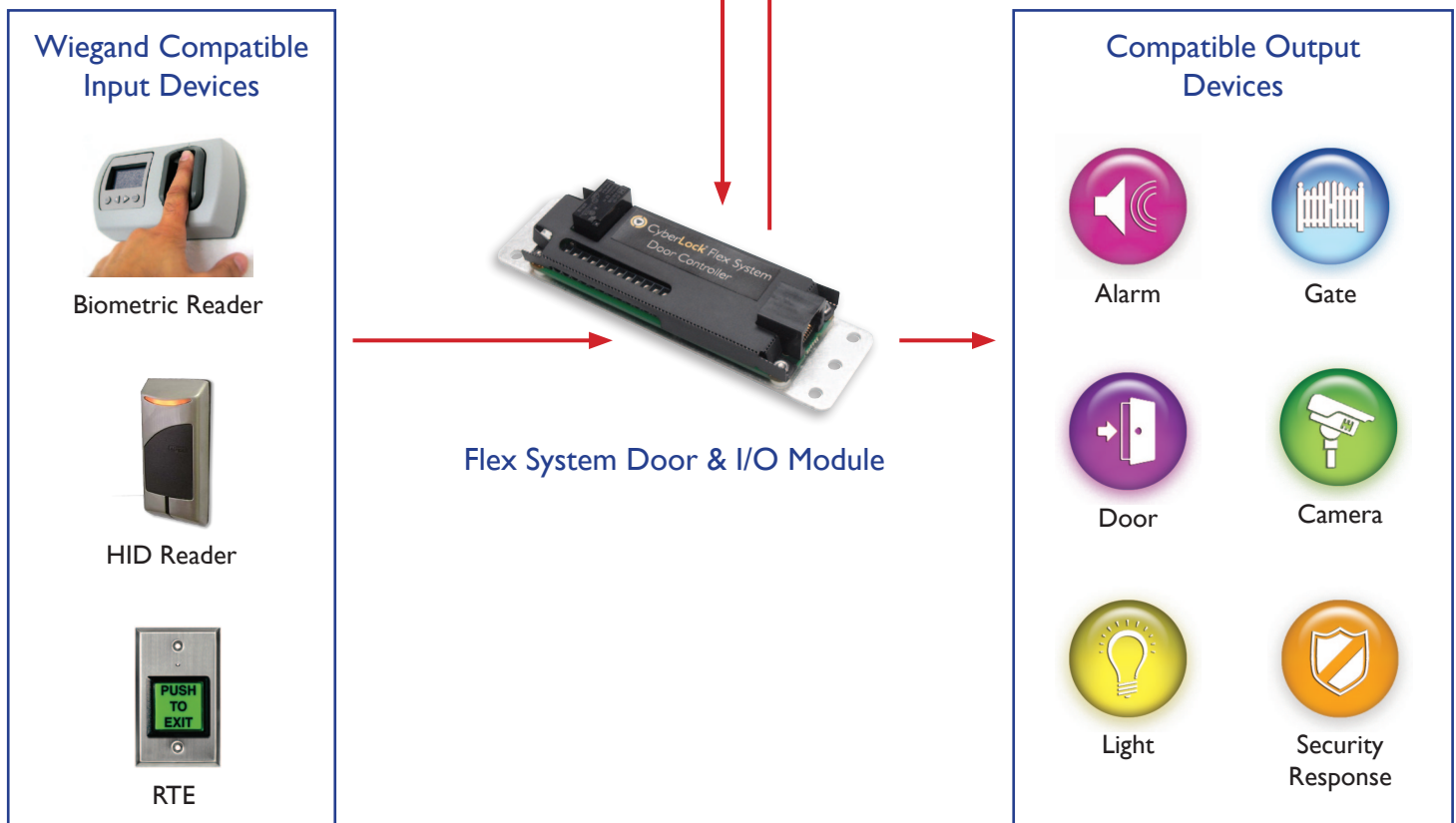


All the benefits of the **CyberLock** key-centric system of intelligent locks and smart keys are now integrated into the world of hardwired security systems.

The Flex System Door & I/O module in conjunction with the Flex System Hub enable control over a wide variety of security devices:

- Open a lock
- Trigger a remote alarm
- Turn on a light
- Toggle a security camera
- Access a CyberKey Vault
- Activate a speaker



Flex System Hub

The Flex System Hub enables communication between a variety of Flex System modules as well as third party input and output devices.

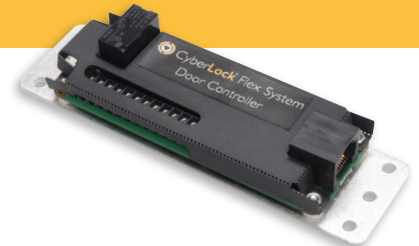


Each Hub:

- Provides eight (8) RS-485 ports
- Provides one (1) RJ-45 (Ethernet) port for connecting to CyberAudit-Web
- Stores access configurations in memory allowing the system to continue operating even during network down times
- Supports back-up power configurations
 - Auxillary power connection
 - Battery option
- Powers Flex System modules
- Senses and charges rechargeable CyberKey smart keys

Flex System Door & I/O Module

The Flex System Door & I/O module communicates between various third party inputs and outputs through the Flex System Hub.



Each Door & I/O module:

- Provides two (2) general purpose input connections
- Provides two (2) general purpose output connections
- Provides one (1) electric strike driver output connection
- Is 26-bit Wiegand compatible
- Connects to the Flex System Hub via RS-485

Wiegand compatible input devices use both inputs. Flex System input devices bypass the Door & I/O module and plug directly into the Flex System Hub.

Flex System Door & I/O Module Software Enhancement Module

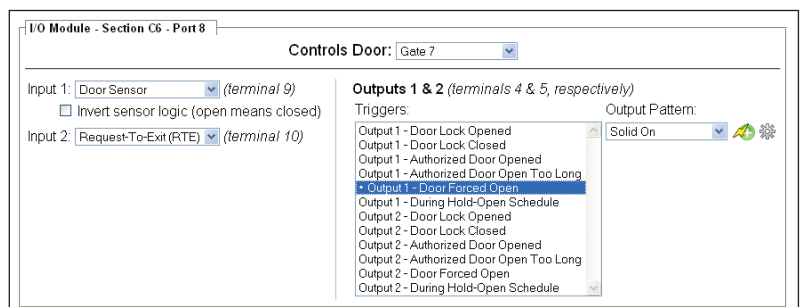
To enable the hardware capabilities of the Flex System Door & I/O module, the associated software enhancement module needs to be installed.

Base Software:

CyberAudit-Web Enterprise

Software Enhancement Module part number:

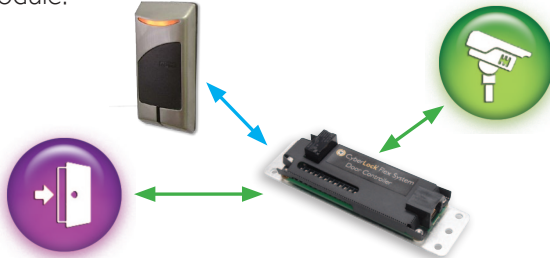
CAW-M02



Combine a Flex System Hub with Door & I/O modules to manage a variety of security elements all under one powerful management platform.

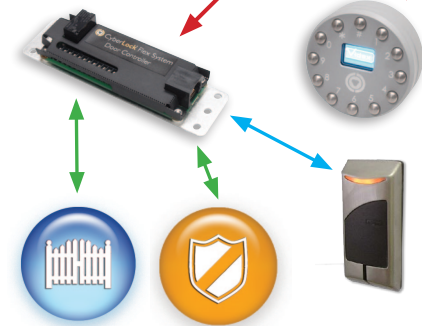
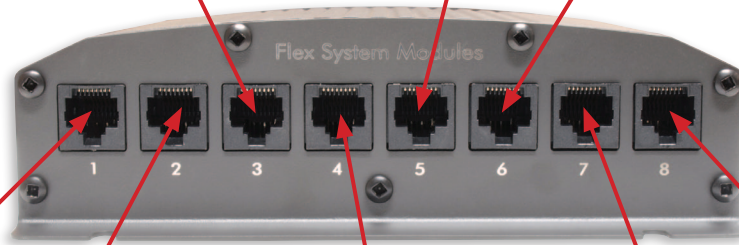
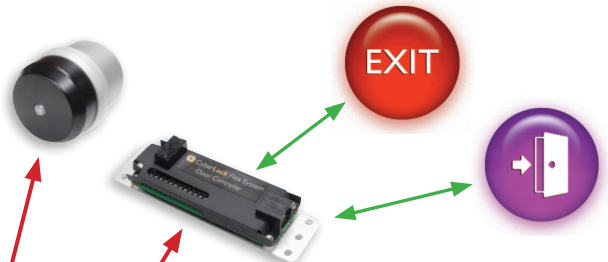
Lock on a Clock ...

Schedule a door to unlock at 7 a.m. and lock at 6 p.m. M-F. Outside of regular business hours, present an RFID card to a reader to open a door and trigger a security camera using a Door & I/O module.



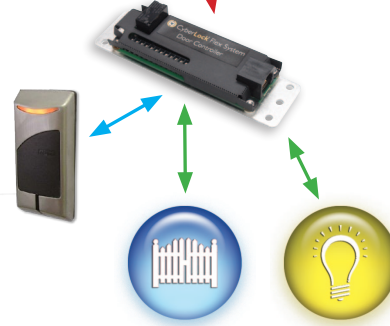
Request to Exit ...

Use a Flex System RFID reader to open a door from the outside and use a request to exit (RTE) button to open a door from the inside.



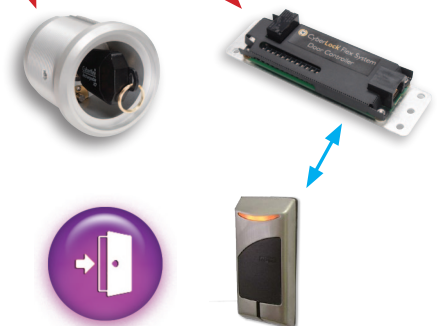
Dual Verification ...

Use dual verification to open a high security gate using a Flex System PIN pad and an HID card reader. Initiate a security response if the person is denied access.



3rd Party Wiegand Device ...

Present an HID RFID card to a legacy reader to open a gate and turn on a light. The light can be at the door for safety or at a security office as an indicator.



Integrate Wired Doors ...

Issue RFID cards to contractors and use a Wiegand compatible reader to open a CyberKey Vault, and then use the CyberKey to open a door.

For more information about the Flex System Door & I/O module, Software Enhancement Module, or system capabilities, please contact the Videx Sales staff at 541-738-5500 or sales@videx.com.



1105 N.E. Circle Blvd., Corvallis, OR 97330
 541-738-5500 • Fax 541-738-5501 • www.cyberlock.com • sales@videx.com